

**ACDBE PROGRAM****POLICY STATEMENT****Section 23.1, 23.23 Objectives/Policy Statement**

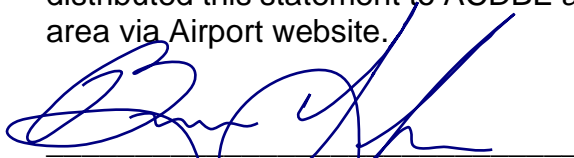
The Central Wisconsin Joint Airport Board on behalf of Central Wisconsin Airport has established an Airport Concession Disadvantaged Business Enterprise (ACDBE) program in accordance with regulations of the U.S. Department of Transportation (DOT), 49 CFR Part 23. The Central Wisconsin Airport is a primary airport and has received federal funds authorized for airport development after January 1988 (authorized under Title 49 of the United States Code). The Central Wisconsin Airport has signed airport grant assurances that it will comply with 49 CFR Part 23.

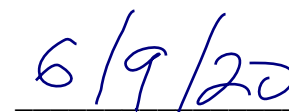
It is the policy of the Central Wisconsin Airport to ensure that ACDBEs as defined in Part 23, have an equal opportunity to receive and participate in concession opportunities. It is also our policy:

1. To ensure nondiscrimination in the award and administration of opportunities for concessions by airports receiving DOT financial assistance;
2. To create a level playing field on which ACDBEs can compete fairly for opportunities for concessions;
3. To ensure that our ACDBE program is narrowly tailored in accordance with applicable law;
4. To ensure that only firms that fully meet this part's eligibility standards are permitted to participate as ACDBEs at our airport(s);
5. To help remove barriers to the participation of ACDBEs in opportunities for concessions at our airport(s); and
6. To provide appropriate flexibility to our airports in establishing and providing opportunities for ACDBEs.

*The Assistant Airport Director-Finance* has been designated as the ACDBE Liaison Officer (ACDBELO). In that capacity, *the Assistant Airport Director- Finance* is responsible for implementing all aspects of the ACDBE program. Implementation of the ACDBE program is accorded the same priority as compliance with all other legal obligations incurred by the Central Wisconsin Airport in its financial assistance agreements with the Department of Transportation.

Central Wisconsin Airport has disseminated this policy statement to the Central Wisconsin Joint Airport Board and all of the components of our organization. We have distributed this statement to ACDBE and non-ACDBE concessionaire communities in our area via Airport website.

  
 Brian Grefe, Airport Director

  
 Date

## **SUBPART A – GENERAL REQUIREMENTS**

### **Section 23.1 Objectives**

The objectives are found in the policy statement on the first page of this program.

### **Section 23.3 Definitions**

The Central Wisconsin Airport will use terms in this program that have the meaning defined in Section 23.3 and Part 26 Section 26.5 where applicable.

### **Section 23.5 Applicability**

The Central Wisconsin Airport is a primary airport and the sponsor of federal airport funds authorized for airport development after January 1988 that was authorized under Title 49 of the United States Code.

### **Section 23.9 Non-discrimination Requirements**

The Central Wisconsin Airport will never exclude any person from participation in, deny any person the benefits of, or otherwise discriminate against anyone in connection with the award and performance of any concession agreement, management contract or subcontract, purchase or lease agreement or other agreement covered by 49 CFR Part 23 on the basis of race, color, sex, or national origin.

In administering its ACDBE program, the Central Wisconsin Airport will not, directly or through contractual or other arrangements, use criteria or methods of administration that have the effect of defeating or substantially impairing accomplishment of the objectives of the ACDBE program with respect to individuals of a particular race, color, sex, or national origin.

The Central Wisconsin Airport acknowledges these representations are also in accordance with obligations contained in its Civil Rights, DBE and ACDBE Airport grant assurances.

The Central Wisconsin Airport will include the following assurances in all concession agreements and management contracts it executes with any firm:

(1) "This agreement is subject to the requirements of the U.S. Department of Transportation's regulations, 49 CFR Part 23. The concessionaire or contractor agrees that it will not discriminate against any business owner because of the owner's race, color, national origin, or sex in connection with the award or performance of any concession agreement, management contract, or subcontract, purchase or lease agreement, or other agreement covered by 49 CFR Part 23.

(2) “The concessionaire or contractor agrees to include the above statements in any subsequent concession agreement or contract covered by 49 CFR part 23, that it enters and cause those businesses to similarly include the statements in further agreements.”

## **Section 23.11 Compliance and Enforcement**

The Central Wisconsin Airport will comply with and is subject to the provisions of 49 CFR Part 26 (§§ 26.101, 26.105, 26.107 and 2 CFR parts 180 and 1200.

The Central Wisconsin Airport will comply with this part or be subject to formal enforcement action under §26.105 or appropriate program sanctions, such as the suspension or termination of Federal funds, or refusal to approve projects, grants or contracts until deficiencies are remedied. Program sanctions may include actions consistent with 49 U.S.C. §§ 47106(d), 47111(d), and 47122.

2 C.F.R. Part 180, Government-wide Debarment and Suspension (Non-procurement), effective November 15, 2006, adopted and supplemented by DOT at 2 C.F.R. Part 1200, effective June 2, 2008, provides Office of Management and Budget (OMB) guidance for Federal agencies on the government-wide debarment and suspension system for non-procurement transactions, programs and activities. 2 C.F.R. Part 1200 adopts the OMB guidance in subparts A through I of 2 CFR part 180, as supplemented by part 1200, as the Department of Transportation policies and procedures for non-procurement suspension and debarment.

The Central Wisconsin Airport’s compliance with all requirements of this part is enforced through the procedures of Title 49 of the United States Code, including 49 U.S.C. 47106(d), 47111(d), and 47122, and regulations implementing them.

The following enforcement actions apply to firms participating in the Central Wisconsin Airport’s ACDBE program:

- (a) For a firm that does not meet the eligibility criteria of subpart D of this part and that attempts to participate as an ACDBE on the basis of false, fraudulent, or deceitful statements or representations or under circumstances indicating a serious lack of business integrity or honesty, the Department of Transportation (DOT) or the Federal Aviation Administration (FAA) may initiate suspension or debarment proceedings against the firm under 2 CFR parts 180 and 1200.
- (b) For a firm that, in order to meet ACDBE goals or other AC/DBE program requirements, uses or attempts to use, on the basis of false, fraudulent or deceitful statements or representations or under circumstances indicating a serious lack of business integrity or honesty, another firm that does not meet the eligibility criteria of subpart D of this part, DOT or FAA may initiate suspension or debarment proceedings against the firm under 2 CFR parts 180 and 1200.

- (c) DOT may take enforcement action under 49 CFR Part 31, Program Fraud and Civil Remedies, against any participant in the ACDBE program whose conduct is subject to such action under 49 CFR Part 31.
- (d) DOT may refer to the Department of Justice, for prosecution under 18 U.S.C. §§ 1001 or other applicable provisions of law, any person who makes a false or fraudulent statement in connection with participation of an ACDBE in the Central Wisconsin Airport's ACDBE program or otherwise violates applicable Federal statutes.

Compliance reviews: The FAA may review the Central Wisconsin Airport's compliance with this part at any time, including but not limited to, reviews of paperwork, on-site reviews, and review of the airport sponsor's monitoring and enforcement mechanism, as appropriate. The FAA Office of Civil Rights may initiate a compliance review based on complaints received.

Any person who knows of a violation of this part by the Central Wisconsin Airport may file a complaint under 14 CFR Part 16 with the Federal Aviation Administration Office of Chief Counsel.

## **SUBPART B – ACDBE PROGRAMS**

### **Section 23.21 ACDBE Program Updates**

The Central Wisconsin Airport is a *non-hub primary* airport required to have an ACDBE program.

As a condition of eligibility for FAA financial assistance, the Central Wisconsin Airport will submit its ACDBE program and overall goals to FAA according to 23.45(a) of this section.

Until the Central Wisconsin Airport's new ACDBE program is submitted and approved, we will continue to implement our ACDBE program that was in effect previously, except with respect to any provision that is contrary to 49 CFR Part 23.

When the Central Wisconsin Airport makes significant changes to its ACDBE program, we will provide the amended program to the FAA for approval prior to implementing the changes.

### **Section 23.23 Administrative Provisions**

**Policy Statement:** The Central Wisconsin Airport is committed to operating its ACDBE program in a nondiscriminatory manner.

The Central Wisconsin Airport's Policy Statement is elaborated on the first page of this program.

**ACDBE Liaison Officer (ACDBELO):** We have designated the following individual as our ACDBELO:

*Assistant Airport Director-Finance  
100 CWA Drive, Ste. 227  
Mosinee, WI 54455  
Phone: 715-693-2147  
Email: DDROZD@fly-cwa.org*

In that capacity, the ACDBELO is responsible for implementing all aspects of the ACDBE program and ensuring that the Central Wisconsin Airport complies with all provision of 49 CFR Part 23. The ACDBELO has direct, independent access to the Airport Director concerning ACDBE program matters. An organizational chart displaying the ACDBELO's position in the organization is found in Attachment 1 to this program.

The ACDBELO is responsible for developing, implementing and monitoring the ACDBE program, in coordination with other appropriate officials. The ACDBELO has a staff of *consultant engineers* to assist in the administration of the program. The duties and responsibilities include the following:

1. Gathers and reports statistical data and other information as required by FAA or DOT.
2. Reviews third party contracts and purchase requisitions for compliance with this program.
3. Works with all departments to set overall annual goals.
4. Ensures that bid notices and requests for proposals are available to ACDBEs in a timely manner.
5. Identifies contracts and procurements so that ACDBE goals are included in solicitations (both race-neutral methods and contract specific goals)
6. Analyzes Central Wisconsin Airport's progress toward attainment and identifies ways to improve progress.
7. Participates in pre-bid meetings.
8. Advises the Airport Director on ACDBE matters and achievement.
9. Chairs the ACDBE Advisory Committee.
10. Provides ACDBEs with information and assistance in preparing bids, obtaining bonding, financing, and insurance; acts as a liaison to the OSDBU-Minority Resource Center (MRC).
11. Plans and participates in ACDBE training seminars.
12. Acts as liaison to the Unified Certification Program (UCP) in Wisconsin.
13. Provides outreach to ACDBEs and community organizations to advise them of opportunities.

14. Maintains the Central Wisconsin Airport's updated directory on certified ACDBEs and distinguishes them from DBEs.

Directory: The Central Wisconsin Airport through the Wisconsin Unified Certification Program (UCP), maintains a directory identifying all firms eligible to participate as DBEs and ACDBEs. The Directory lists the firm's name, address, phone number, date of the most recent certification, and the type of work the firm has been certified to perform as an ACDBE.

The UCP will ensure that the Directory lists each type of work for which a firm is eligible to be certified by using the most specific NAICS code available to describe each type of work. The UCP will make any changes to the current directory entries necessary to meet the requirements of this paragraph.

The UCP revises the Directory annually. We make the Directory available as follows: *on the Airport's website*. The Directory may be found in Attachment 2 to this program document. (26.31).

### **Section 23.25 Ensuring Nondiscriminatory Participation of ACDBEs**

The Central Wisconsin Airport will take the following measures to ensure nondiscriminatory participation of ACDBEs in concessions, and other covered activities (23.25(a)):

1. The Central Wisconsin Airport will publish notice seeking Requests for Proposals in local newspapers, and the airport website.
2. Since we are a small airport and certain concession opportunities may be limited to large companies, we will require these businesses to make Good Faith Efforts to explore the purchase of goods and services from ACDBE vendors.

The Central Wisconsin Airport will seek ACDBE participation in all types of concession activities, rather than concentrating participation in one category or a few categories to the exclusion of others. (23.25(c))

The Central Wisconsin Airport's overall goal methodology and a description of the race-neutral measures it will use to meet the goals are described in Section 23.25 and Attachment 4 of this plan. The goals are set consistent with the requirements of Subpart D. (23.25(b), (d))

If the Central Wisconsin Airport projects that race-neutral measures alone, are not sufficient to meet an overall goal, it will use race-conscious measures as described in Section 23.25 (e) (1-2) and Attachment 4 and 5 of this plan. (23.25(e))

The Central Wisconsin Airport will require businesses subject to ACDBE goals at the airport to make good faith efforts to explore all available options to meet goals, to the

maximum extent practicable, through direct ownership arrangements with ACDBEs. (23.25(f))

The Central Wisconsin Airport will not use set-asides or quotas as a means of obtaining ACDBE participation. (23.25(g)).

### **Section 23.27 Reporting**

We will retain sufficient basic information about our ACDBE program implementation, ACDBE certification and the award and performance of agreements and contracts to enable the FAA to determine our compliance with Part 23. This data will be retained for a minimum of 3 years following the end of the concession agreement or other covered contract.

Beginning March 1, 2006, we will submit to the FAA Regional Civil Rights Office, an annual ACDBE participation report on the form in Appendix A of Part 23.

### **Section 23.29 Compliance and Enforcement Procedures**

The Central Wisconsin Airport will take the following monitoring and enforcement mechanisms to ensure compliance with 49 CFR Part 23.

1. We will bring to the attention of the Department of Transportation any false, fraudulent, or dishonest conduct in connection with the program, so that DOT can take the steps (e.g., referral to the Department of Justice for criminal prosecution, referral to the DOT Inspector General, action under suspension and debarment or Program Fraud and Civil Penalties rules) provided in 26.107.
2. We will consider similar action under our own legal authorities, including responsibility determinations in future contracts. We have listed the regulations, provisions, and contract remedies available to us in the events of non-compliance with the ACDBE regulation by a participant in our procurement activities (See Attachment 3). (26.37)
3. We will also implement a monitoring and enforcement mechanism to ensure that work committed to ACDBEs at contract award is actually performed by the ACDBEs. This mechanism will provide for a running tally of actual ACDBE attainments (e.g. payment actually made to ACDBE firms), including a means of comparing these attainments to commitments. This will be accomplished as described in Attachment 3.
4. In our reports of ACDBE participation to FAA, we will show both commitments and attainments, as required by the DOT reporting form entitled Uniform Report of ACDBE Participation.

In addition, the Central Wisconsin Airport will insert the clauses in every concession agreement and management contract as set forth in Attachment 3.

### **SUBPART C – CERTIFICATION AND ELIGIBILITY**

**Section 23.31** We will use the procedures and standards of Part 26, except as provided in 23.31, for certification of ACDBEs to participate in our concessions program and such standards are incorporated herein.

The Central Wisconsin Airport is a member of a Unified Certification Program (UCP) administered by *Wisconsin*. The UCP will meet all of the requirements of this section.

The State of Wisconsin's UCP directory of eligible DBEs specifies whether a firm is certified as a DBE for purposes of Part 26, and ACDBE for purposes of part 23, or both.

Prior to entering into a new contract, extension, or option with a currently certified ACDBE, we will review their eligibility at that time (i.e., "as soon as possible") rather than waiting until the latest date allowed under Part 23.

We will treat a firm as a small business eligible to be certified as an ACDBE if its gross receipts, averaged over the firm's previous three fiscal years do not exceed \$56.42 million for non-car rental ACDBEs and \$75.23 million for car rental ACDBEs. The size standard for banks and other financial institutions is \$1 billion in assets, for pay telephone company's is 1500 employees and for ACDBE automobile dealers is 350 employees.

**Section 23.35** The personal net worth standard used in determining eligibility for purposes of Part 23 is \$1.32 million.

*We recognize that Personal net worth* means the net value of the assets of an individual remaining after total liabilities are deducted. An individual's personal net worth (PNW) does not include the following:

- (1) The individual's ownership interest in an ACDBE firm or a firm that is applying for ACDBE certification;
- (2) The individual's equity in his or her primary place of residence; and
- (3) Other assets that the individual can document are necessary to obtain financing or a franchise agreement for the initiation or expansion of his or her ACDBE firm (or have in fact been encumbered to support existing financing for the individual's ACDBE business) to a maximum of \$3 million.

The effectiveness of this paragraph (3) of this definition is suspended with respect to any application for ACDBE certification made or any financing or franchise agreement obtained after June 20, 2012. (23.3)



An individual's personal net worth includes only his or her own share of assets held jointly or as community property with the individual's spouse.

Any person who has a personal net worth exceeding this amount is not a socially and economically disadvantaged individual, even if a member of a group otherwise presumed to be disadvantaged. (See 23.3 - *Personal Net Worth* definition and 23.35)

We will presume that a firm that is certified as a DBE under part 26 is eligible to participate as an ACDBE.

We acknowledge that a prime contractor includes a firm holding a prime contract with an airport concessionaire to provide goods or services to the concessionaire or a firm holding a prime concession agreement with a recipient. We recognize that the eligibility of Alaska Native Corporations (ANC) owned firms for purposes of part 23 is governed by part 26 section 26.73(h). (23.39(c)(d)).

We will use the certification standards of part 23 to determine the ACDBE eligibility of firms that provide goods and services to concessionaires. (23.39(i))

In instances when the eligibility of a concessionaire is removed after the concessionaire has entered into a concession agreement because the firm exceeded the size standard or the owner has exceeded the PNW standard, and the firm in all other respects remains an eligible DBE, we may continue to count the concessionaire's participation toward ACDBE goals during the remainder of the current concession agreement. We will not count the concessionaire's participation toward ACDBE goals beyond the termination date for the concession agreement in effect at the time of the decertification. (23.39(e))

We will use the Uniform Application Form found in appendix F to part 26 with additional instruction as stated in 23.39(g).

## **SUBPART D – GOALS, GOOD FAITH EFFORTS, AND COUNTING**

### **Section 23.41 Basic Overall Goal Requirement**

*The Central Wisconsin Airport will establish two separate overall ACDBE goals; one for car rentals and another for concessions other than car rentals. The overall goals will cover a three year period and the sponsor will review the goals annually to make sure the goal continues to fit the sponsor's circumstances. We will report any significant overall goal adjustments to the FAA.*

If the average annual concession revenues for car rentals over the preceding 3 years do not exceed \$200,000, we need not submit an overall goal for car rentals. Likewise, if the average annual concession revenues for concessions other than car rentals over the preceding 3 years do not exceed \$200,000, we need not submit an overall goal for

concessions other than car rentals. We understand that “revenue” means total revenue generated by concessions, not the fees received by the airport from concessionaires.

The Recipient’s overall goals will provide for participation by all certified ACDBEs and will not be subdivided into group-specific goals.

### **Section 23.43 Consultation in Goal Setting**

The Central Wisconsin Airport consults with stakeholders before submitting the overall goals to the FAA. Stakeholders will include Airport Board and tenants, as well as existing concessionaires themselves, and other officials or organizations which could be expected to have information concerning the availability of disadvantaged businesses, the effects of discrimination on opportunities for ACDBEs, and the sponsors efforts to increase participation of ACDBEs.

When submitting our overall goals, we will identify the stakeholders that we consulted with and provide a summary of the information obtained from the stakeholders.

### **Section 23.45 Overall Goals**

The sponsor is a *nonhub primary* airport. As a condition of eligibility for FAA financial assistance, the sponsor will submit its overall goals according to the following schedule:

<b>Primary Airport Size</b>	<b>Region</b>	<b>Date Due</b>	<b>Period Covered</b>	<b>Next Goal Due</b>
<b>Non-Hubs</b>	<b>All regions</b>	<b>October 1, 2016</b>	<b>2017/2018/2019</b>	<b>October 1, 2019 (2020/2021/2022)</b>

If a new concession opportunity arises at a time that falls between the normal submission dates above and the estimated average of annual gross revenues are anticipated to be \$200,000 or greater, the sponsor will submit an appropriate adjustment to our overall goal to FAA for approval no later than 90 days before issuing the solicitation for the new concession opportunity. (23.45i)

The sponsor will establish overall goals in accordance with the 2-Step process as specified in section 23.51. After determining the total gross receipts for the concession activity, the first step is to determine the relative availability of ACDBEs in the market area, “base figure”. The second step is to examine all relevant evidence reasonably available in the sponsor’s jurisdiction to determine if an adjustment to the Step 1 “base figure” is necessary so that the goal reflects as accurately as possible the ACDBE participation the sponsor would expect in the absence of discrimination. Evidence may include, but is not limited to past participation by ACDBEs, a disparity study, evidence from related fields that affect ACDBE opportunities to form, grow, and compete (such as

statistical disparities in ability to get required financing, bonding, insurance; or data on employment, self-employment, education, training and union apprenticeship)

The sponsor will arrange solicitations, times for the presentation of bids, quantities, specifications, and delivery schedules in ways that facilitate participation by ACDBEs and other small businesses and by making contracts more accessible to small businesses, by means such as those provided under § 26.39 of this part.

A description of the methodology to calculate the overall goal for car rentals, the goal calculations, and the data we relied on can be found in *Attachment 5* to this program.

A description of the methodology to calculate the overall goal for concessions other than car rentals, the goal calculations, and the data we relied on can be found in *Attachment 4* to this program.

**Projection of Estimated Race-Neutral & Race-Conscious Participation (23.45(f), 23.25(d-e))**

The breakout of estimated race-neutral and race-conscious participation can be found with the goal methodology in Attachments 4 and 5 to this program. This section of the program will be reviewed annually when the goal calculation is reviewed under 23.41(c).

**Concession Specific Goals (Also include this language in the ACDBE goal attachment) (23.25 (c)(e)(1)(iv))**

The Central Wisconsin Airport will use concession specific goals to meet any portion of the overall goals it does not project being able to meet using race-neutral means. Concession specific goals are established so that, over the period to which the overall goals apply, they will cumulatively result in meeting any portion of our overall goal that is not projected to be met through the use of race-neutral means.

We will establish concession specific goals only on those concessions that have direct ownership arrangements (except car rentals), sublease, or subcontracting possibilities. We will require businesses subject to ACDBE goals at the airport (except car rental companies) to make good faith efforts to explore all available options to meet goals, to the maximum extent practicable, through direct ownership arrangements with DBEs (23.25 (f)). Car rental firms are not required to change their corporate structure to provide for direct ownership arrangements. In the case of a car rental goal, where it appears that all or most of the goal is likely to be met through the purchases by car rental companies of vehicles or other goods or services from ACDBEs, one permissible alternative is to structure the goal entirely in terms of purchases of goods and services.)

We need not establish a concession specific goal on every such concession, and the size of concession specific goals will be adapted to the circumstances of each such concession (e.g., type and location of concession, availability of ACDBEs.)

If the objective of a concession specific goal is to obtain ACDBE participation through direct ownership with an ACDBE, the Central Wisconsin Airport will calculate the goal as a percentage of the total estimated annual gross receipts from the concession. (23.25(e)(1)(i))

If the concession specific goal applies to purchases and/or leases of goods and services, the Central Wisconsin Airport will calculate the goal by dividing the estimated dollar value of such purchases and/or leases from ACDBEs by the total estimated dollar value of all purchases to be made by the concessionaire. (23.25(e)(1)(ii))

### **Good Faith Efforts on Concession Specific Goals (23.25(e)(1)(iii), (iv))**

To be eligible to be awarded a concession that has a contract specific goal, bidders/offerors must make good faith efforts to meet the goal. A bidder/offeror may do so either by obtaining enough ACDBE participation to meet the goal or by documenting that it made sufficient good faith efforts to do so. (23.25(e)(1)(iv)). Examples of good faith efforts are found in Appendix A to 49 CFR Part 26. The procedures applicable to 49 CFR Sections 26.51 and 26.53, regarding contract goals apply to the Central Wisconsin Airport's contract specific goals. Specifically:

#### **Section 26.53 Good Faith Efforts Procedures**

##### Demonstration of good faith efforts (26.53(a) & (c))

The obligation of the bidder/offeror is to make good faith efforts. The bidder/offeror can demonstrate that it has done so either by meeting the contract goal or documenting good faith efforts. Examples of good faith efforts are found in Appendix A to Part 26.

Assistant Airport Director-Finance is responsible for determining whether a bidder/offeror who has not met the contract goal has documented sufficient good faith efforts to be regarded as responsive.

We will ensure that all information is complete and accurate and adequately documents the bidder/offeror's good faith efforts before we commit to the performance of the contract by the bidder/offeror.

##### Information to be submitted (26.53(b))

In our solicitations for concession contracts for which a contract goal has been established, we will require the following:

- (1) Award of the contract will be conditioned on meeting the requirements of this section;
- (2) All bidders or offerors will be required to submit the following information to the recipient, at the time provided in paragraph (b)(3) of this section:

- (i) The names and addresses of ACDBE firms that will participate in the contract;
  - (ii) A description of the work that each ACDBE will perform. To count toward meeting a goal, each ACDBE firm must be certified in a NAICS code applicable to the kind of work the firm would perform on the contract;
  - (iii) The dollar amount of the participation of each ACDBE firm participating;
  - (iv) Written documentation of the bidder/offeror's commitment to use an ACDBE sub-concession whose participation it submits to meet a contract goal; and
  - (v) Written confirmation from each listed ACDBE firm that it is participating in the contract in the kind and amount of work provided in the prime concessionaire's commitment.
  - (vi) If the contract goal is not met, evidence of good faith efforts (see Appendix A of this part). The documentation of good faith efforts must include copies of each ACDBE and non-ACDBE sub-concession quote submitted to the bidder when a non-ACDBE sub-concession was selected over an ACDBE for work on the contract; and
- (3) We will require that the bidder/offeror present the information required by paragraph (b)(2) of this section:

Under sealed bid procedures, as a matter of **responsiveness**, or with initial proposals, under contract negotiation procedures;

Provided that, in a negotiated procurement, including a design-build procurement, the bidder/offeror may make a contractually binding commitment to meet the goal at the time of bid submission or the presentation of initial proposals but provide the information required by paragraph (b)(2) of this section before the final selection for the contract is made by the recipient.

#### Administrative reconsideration (26.53(d))

Within 7 business days of being informed by Central Wisconsin Airport that it is not *responsive* because it has not documented sufficient good faith efforts, a bidder/offeror may request administrative reconsideration. Bidder/offerors should make this request in writing to the following reconsideration official: Airport Director, Address: 100 CWA Drive, Ste. 227, Mosinee, WI 54455, Phone: 715-693-2147, Email: [BGREFE@fly-cwa.org](mailto:BGREFE@fly-cwa.org). The reconsideration official will not have played any role in the original determination that the bidder/offeror did not document sufficient good faith efforts.

As part of this reconsideration, the bidder/offeror will have the opportunity to provide written documentation or argument concerning the issue of whether it met the goal or made adequate good faith efforts to do so. The bidder/offeror will have the opportunity to meet in person with our reconsideration official to discuss the issue of whether it met the goal or made adequate good faith efforts to do. We will send the bidder/offeror a written decision on reconsideration, explaining the basis for finding that the bidder did or did not meet the goal or make adequate good faith efforts to do so. The result of the

reconsideration process is not administratively appealable to the Department of Transportation.

Good Faith Efforts when an ACDBE is replaced on a concession (26.53(f))

The Central Wisconsin Airport will require a concessionaire to make good faith efforts to replace an ACDBE that is terminated or has otherwise failed to complete its concession agreement, lease, or subcontract with another certified ACDBE, to the extent needed to meet the concession specific goal. We will require the concessionaire to notify the ACDBELO immediately of the ACDBEs inability or unwillingness to perform and provide reasonable documentation.

In this situation, we will require the concessionaire to obtain our prior approval of the substitute ACDBE and to provide copies of new or amended subcontracts, or documentation of good faith efforts.

Central Wisconsin Airport will provide such written consent only if we agree, for reasons stated in our concurrence document, that the prime concession has good cause to terminate the ACDBE firm. For purposes of this paragraph, good cause includes the following circumstances:

- (1) The listed ACDBE sub-concession fails or refuses to execute a written contract;
- (2) The listed ACDBE sub-concession fails or refuses to perform the work of its sub-concession in a way consistent with normal industry standards. Provided however, that good cause does not exist if the failure or refusal of the ACDBE sub-concession to perform its work on the sub-concession results from the bad faith or discriminatory action of the prime contractor;
- (3) The listed ACDBE sub-concession fails or refuses to meet the prime concession's reasonable, non-discriminatory bond requirements.
- (4) The listed ACDBE sub-concession becomes bankrupt, insolvent, or exhibits credit unworthiness;
- (5) The listed ACDBE sub-concession is ineligible to work on public works projects because of suspension and debarment proceedings pursuant to 2 CFR Parts 180, 215 and 1,200 or applicable state law;
- (6) Central Wisconsin Airport has determined that the listed ACDBE subcontractor is not responsible;
- (7) The listed ACDBE sub-concession voluntarily withdraws from the project and provides to us written notice of its withdrawal;
- (8) The listed ACDBE is ineligible to receive ACDBE credit for the type of work required;
- (9) An ACDBE owner dies or becomes disabled with the result that the listed ACDBE concession is unable to complete its work on the contract;
- (10) Other documented good cause that we have determined compels the termination of the ACDBE sub-concession. Provided, that good cause does not exist if the prime concession seeks to terminate an ACDBE it relied upon

to obtain the contract so that the prime concession can self-perform the work for which the ACDBE concession was engaged or so that the prime contractor can substitute another ACDBE or non-ACDBE concession after contract award.

Before transmitting to us its request to terminate and/or substitute an ACDBE sub-concession, the prime concession must give notice in writing to the ACDBE sub-concession, with a copy to us, of its intent to request to terminate and/or substitute, and the reason for the request.

The prime concession must give the ACDBE five days to respond to the prime concession's notice and advise us and the concessionaire of the reasons, if any, why it objects to the proposed termination of its sub-concession and why we should not approve the prime concession's action. If required in a particular case as a matter of public necessity (e.g., safety), we may provide a response period shorter than five days.

The Central Wisconsin Airport will require a concessionaire to make good faith efforts to replace an ACDBE that is terminated or has otherwise failed to complete its work on a concession with another certified ACDBE. These good faith efforts shall be directed at finding another ACDBE to perform at least the same amount of work under the concession contract as the ACDBE that was terminated, to the extent needed to meet the concession contract goal that we established for the procurement. The good faith efforts shall be documented by the concessionaire. If we request documentation from the concessionaire under this provision, the concessionaire shall submit the documentation to us within 7 days, which may be extended for an additional 7 days if necessary at the request of the concessionaire, and the recipient shall provide a written determination to the concessionaire stating whether or not good faith efforts have been demonstrated.

We will include in each prime concession contract the contract clause required by § 26.13(b) stating that failure by the concessionaire to carry out the requirements of this part is a material breach of the contract and may result in the termination of the concession contract or such other remedies set forth in that section that we deem appropriate if the prime concessionaire fails to comply with the requirements of this section.

If the concessionaire fails or refuses to comply in the time specified, our contracting office will issue an order stopping all or part of payment/work until satisfactory action has been taken. If the concessionaire still fails to comply, the contracting officer may issue a termination for default proceeding.

### **Section 23.53 Counting ACDBE Participation for Car Rental Goals**

We will count ACDBE participation toward overall goals other than car rental as provided in 49 CFR 23.53.

### **Section 23.55 Counting ACDBE Participation for Concessions Other than Car Rentals**

We will count ACDBE participation toward overall goals other than car rental as provided in 49 CFR 23.55.

**Section 23.57 (b) Goal shortfall accountability.** If the awards and commitments on our Uniform Report of ACDBE Participation (found in Appendix A to this Part) at the end of any fiscal year are less than the overall goal applicable to that fiscal year, we will:

- (1) Analyze in detail the reasons for the difference between the overall goal and our awards and commitments in that fiscal year;
- (2) Establish specific steps and milestones to correct the problems we have identified in our analysis to enable us to fully meet our goal for the new fiscal year;
- (3) *We understand we may be regarded as being in noncompliance with this part, and therefore subject to the remedies in § 23.11 of this part and other applicable regulations, for failing to implement our ACDBE program in good faith if any of the following things occur:*

*(i) We do not submit our analysis and corrective actions to FAA in a timely manner as required under paragraph (b)(3) of this section;*

*(ii) FAA disapproves our analysis or corrective actions; or*

*(iii) We do not fully implement:*

*(A) The corrective actions to which we have committed, or*

*(B) Conditions that FAA has imposed following review of our analysis and corrective actions.*

*(C) If information coming to the attention of FAA demonstrates that current trends make it unlikely that we, as an airport, will achieve ACDBE awards and commitments that would be necessary to allow us to meet our overall goal at the end of the fiscal year, FAA may require us to make further good faith efforts, such as modifying our race-conscious/race-neutral split or introducing additional race-neutral or race-conscious measures for the remainder of the fiscal year.*



**Section 23.61 Quotas or Set-asides**

We will not use quotas or set-asides as a means of obtaining ACDBE participation.

**SUBPART E – OTHER PROVISIONS****Section 23.71 Existing Agreements**

We will assess potential for ACDBE participation when an extension or option to renew an existing agreement is exercised, or when a material amendment is made. We will use any means authorized by part 23 to obtain a modified amount of ACDBE participation in the renewed or amended agreement.

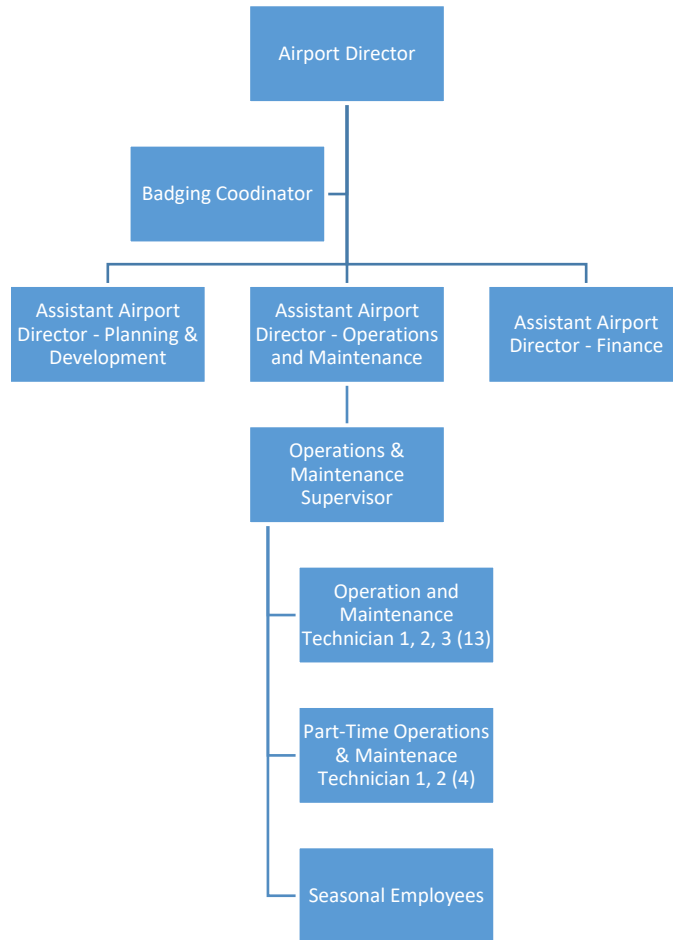
**Section 23.79 Geographic Preferences**

We will not use a “local geographic preference”, i.e., any requirement that gives an ACDBE located in one place (e.g., *your local area*) an advantage over ACDBEs from other places in obtaining business as, or with, a concession at Central Wisconsin Airport.

**ATTACHMENTS**

Attachment 1	Organizational Chart
Attachment 2	DBE/ACDBE Directory (or website link)
Attachment 3	Monitoring and Enforcement Mechanisms
Attachment 4	Overall Goal for Concessions other than Car Rental Calculation, Consultation, Breakout of Estimated Race-Neutral & Race-Conscious Participation
Attachment 5	Overall Goals for Car Rentals Calculation, Consultation, Breakout of Estimated Race-Neutral & Race-Conscious Participation
Attachment 6	Form 1 & 2 for Demonstration of Good Faith Efforts
Attachment 7	Certification Application Forms
Attachment 8	Procedures for Removal of ACDBEs Eligibility
Attachment 9	State's UCP Agreement
Attachment 10	Regulations: 49 CFR Part 23

**Attachment 1**  
**Organizational Chart**



**Attachment 2**

**Wisconsin DBE Directory**

<https://wisconsindot.gov/Pages/doing-bus/civil-rights/dbe/certified-firms.aspx>

### Attachment 3

#### Sample Monitoring and Enforcement Mechanisms

The Central Wisconsin Airport has several remedies available to enforce the ACDBE requirements contained in its contracts, including, but not limited to, the following:

1. Breach of contract action, pursuant to the terms of the contract;
2. Breach of contract action, pursuant to Wisconsin State Code; and

In addition, the federal government has available several enforcement mechanisms that it may apply to firms participating in the ACDBE program, including, but not limited to, the following:

1. Suspension or debarment proceedings pursuant to 49 CFR part 23 and 2 CFR parts 180 and 1200
2. Enforcement action pursuant to 49 CFR part 31; and
3. Prosecution pursuant to 18 USC 1001.

The Central Wisconsin Airport will implement various mechanisms to monitor program participants to ensure they comply with Part 23, including, but not limited to the following:

1. We will insert the following provisions into concessions agreements and management contracts:

*A. It is the requirement of the Federal Department of Transportation (“DOT”) that Airport Concession Disadvantaged Business Enterprises (ACDBE) as defined in 49 CFR Part 23 shall have the maximum opportunity to participate in the performance of concession agreements at the Airport. Consequently, the ACDBE/DBE requirements of 49 CFR Part 23 are hereby included in this Agreement. Concessionaire agrees to comply with the requirements of any such regulations as applicable to this Agreement. Furthermore, Concessionaire agrees to submit information at the request of the Airport concerning the Concession, ACDBE(s) that may participate in this Agreement. This information will be provided quarterly and include:*

1. *The name and address of each ACDBE/DBE*
2. *A description of work performed by each ACDBE/DBE*
3. *The dollar value of the ACDBE/DBE’s contracted participation*
4. *A copy of the Wisconsin Unified Certification Program (UCP) Certification with initial submission and updated copy upon expiration The Concessionaire will also provide information as requested by the Airport describing the purchase or lease of goods or services from ACDBE(s)/DBE(s) including, but not limited to, the purchase or lease of*

*automobiles, fuel, tires, maintenance and janitorial services and other services.*

*B. In the event of breach of any of Concessionaires' duties, the Airport shall have the right to terminate this Agreement and to re-enter and repossess the facilities and hold the same as if said Agreement had never been made or issued, provided, however, that the Concessionaire shall have the right to contest said alleged breach under applicable procedures, and any sanctions under or termination of this Agreement shall be withheld pending completion of such procedures; and provided, however, that the Concessionaire will pursue these applicable procedures with diligence and dispatch.*

2. We will implement the following additional monitoring and compliance procedures:

A. *Each year we will review concession leases and quarterly submissions to determine compliance with any ACDBE/DBE requirements. The Airport reserves the right to audit payments made to ACDBE subcontractors and gross receipts earned by or payments for goods and services and management agreements to ACDBEs to ensure that the actual amount equals or exceeds the dollar amounts stated in the report of proposed ACDBE participation. If the Airport determines that the concessionaire is not complying with the contract requirements, it will implement contract remedies.*

3. We will implement our compliance and monitoring procedures as follows:

Since the Airport is small and the number of concessionaires is small, informal contact is easy and frequent. Informal meetings will be held with concessionaires as needed.

**Attachment 4**

**Section 23.45: Overall Goal Calculation for Concessions Other Than Car Rentals**

This will be submitted separately in Civil Rights Connect.

**Attachment 5**

**Section 23.45: Overall Goal Calculation for Car Rentals**

This will be submitted separately in Civil Rights Connect.



**Attachment 6**

**Forms 1 & 2 for Demonstration of Good Faith Efforts**

**FORM 1: AIRPORT CONCESSION DISADVANTAGED BUSINESS ENTERPRISE (ACDBE) UTILIZATION**

The undersigned bidder/offeror has satisfied the requirements of the bid/proposal specification in the following manner (please check the appropriate space):

\_\_\_\_\_ The bidder/offeror is committed to a minimum of \_\_\_\_\_ % ACDBE utilization on this contract.

\_\_\_\_\_ The bidder/offeror (if unable to meet the ACDBE goal of \_\_\_\_\_%) is committed to a minimum of \_\_\_\_\_% ACDBE utilization on this contract and submitted documentation demonstrating good faith efforts.

Name of bidder/offeror's firm: \_\_\_\_\_

State Registration No. \_\_\_\_\_

By \_\_\_\_\_ Title \_\_\_\_\_  
(Signature)

**FORM 2: LETTER OF INTENT**

Name of bidder/offeror's firm: \_\_\_\_\_

Address: \_\_\_\_\_

City: \_\_\_\_\_ State: \_\_\_\_\_ Zip: \_\_\_\_\_

Name of ACDBE firm: \_\_\_\_\_

Address: \_\_\_\_\_

City: \_\_\_\_\_ State: \_\_\_\_\_ Zip: \_\_\_\_\_

Telephone: \_\_\_\_\_

Description of work to be performed by ACDBE firm:

-----  
-----  
-----  
-----

The bidder/offeror is committed to utilizing the above-named ACDBE firm for the work described above. The estimated dollar value of this work is \$ \_\_\_\_\_.

**Affirmation**

The above-named ACDBE firm affirms that it will perform the portion of the contract for the estimated dollar value as stated above.

By \_\_\_\_\_  
(Signature) (Title)

**If the bidder/offeror does not receive award of the prime contract, any and all representations in this Letter of Intent and Affirmation shall be null and void.**

(Submit this page for each ACDBE subcontractor.)

**Attachment 7**

**ACDBE Certification Application Form**

<https://wisconsindot.gov/Pages/doing-bus/civil-rights/dbe/eligibility-requirements.aspx>

**Attachment 8**

**Procedures for Removal of ACDBEs Eligibility**

Central Wisconsin Airport will rely on the Removal of ACDBE' s Eligibility procedures outlined in 49 CFR Part 26, 26.87 for removal of ACDBE' s eligibility.

**ATTACHMENT 9**

**State's UCP Agreement**

<https://wisconsindot.gov/Pages/doing-bus/civil-rights/dbc/certified-firms.aspx>

**Attachment 10**

**Regulations: 49 CFR Part 23**

<https://www.ecfr.gov/cgi-bin/text-idx?SID=7d57da4319c5a595f3174a4a0cf9944b&node=pt49.1.23&rgn=div5>